



## Product News • LED

### LED R9

#### Professional Series



GU5.3 / 6W



GU10 / 15W



E27 / 20W



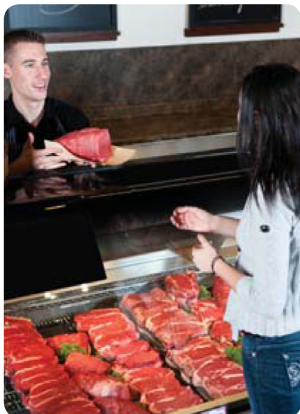
### Optimised colour rendition LED lamps for lighting food displays

The MEGAMAN® LED R9 series has been specifically designed to maximise the visual impact of meat, fresh fruit and vegetables by increasing the red colour rendition of the product. Thanks to the MEGAMAN® innovative design and patented Thermal Conductive Highway™ (TCH) technology, these lamps offer retailers a high quality lighting intensity and superb performance, and are the best alternative to traditional halogen and metal halide lamps.

MEGAMAN LED R9 reflectors offer high-performance, hassle-free retail lighting solutions while eliminating the shortcomings of metal halide lamps, such as pale green light during lamp start-up, incapable of hot re-strike in case of power failure, exposure of strong UV and hazardous radioactive substance Kr85 upon lamp breakage, etc.

#### Product Features:

- High red colour rendition (R9) value of  $\geq 75$
- Overall colour rendition is up to Ra94
- Different lamp shapes available to suit various applications
- Instant start
- Achieve desired light colour once switched on
- Hot re-strike
- No UV or radioactive Kr85 in case of lamp breakage
- Long life expectancy up to 30,000 hours
- High colour temperature consistency: tolerance is only +/-100K



#### Applications:

- Supermarkets
- Butcher shops
- Grocery stores
- Cosmetic shops
- Fashion boutiques

### Specifications\*

Description	MR16	
Model No	MM03045	MM03046
Voltage	AC/DC 12V	
Lamp Base	GU5.3	
Wattage (W)	6	
Lamp Life (hours)	25.000	
Max. Luminous Intensity (cd)	1300	850
Beam Angle (°)	24	36
Colour Temp. [CRI]	2800K (Ra94)	
Diameter (mm)	50	
Length (mm)	51	
Weight (g)	60	
Operating Temp. (°C)	-30 to +40	
Transformer	Works with AC/DC 12V halogen transformer*	

Description	AR111		PAR38
Model No	MM03070	MM03181	MM03052
Voltage	220-240		
Lamp Base	GU10		E27
Wattage (W)	15		20
Lamp Life (hours)	30.000		
Max. Luminous Intensity (cd)	3600	1400	5000
Beam Angle (°)	24	45	25
Luminous Flux (lm)	530	570	900
Colour Temp. [CRI]	2800K (Ra94)		
Diameter (mm)	111	121	
Length (mm)	94	133	
Weight (g)	245	230	485
Operating Temp. (°C)	-30 to +40		

\* Preliminary data

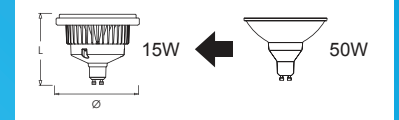
#### MM03045, MM03046

#### Halogen MR16



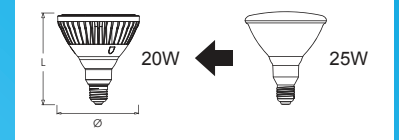
#### MM03070, MM03181

#### Halogen AR111



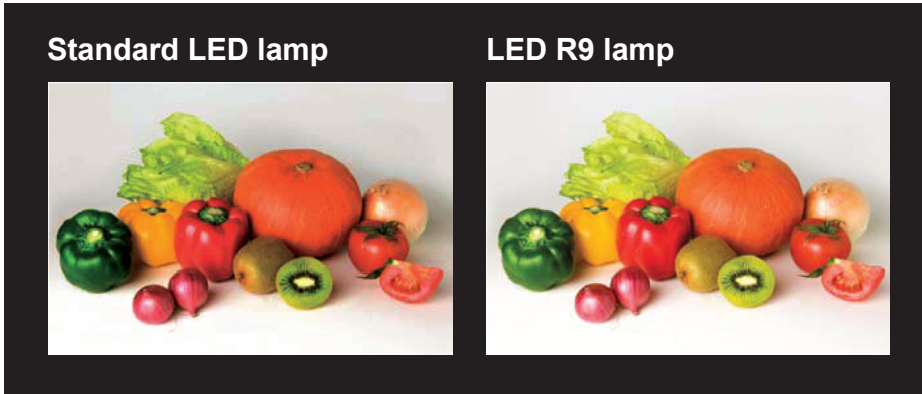
#### MM03052

#### Metal Halide PAR38





Learn more about LED R9



When we determine the general colour rendering index (Ra), the first eight colours in the Test Colour Sample (TCS; see Figure 1) defined in accordance with DIN 6169 are employed for the calculation. In addition to these eight colours (R1 to R8), there are another six colours (R9 to R14) that are more vivid and known as “saturated” colours.

The MEGAMAN® LED R9 lamp not only has a high red colour rendition (R9) value of 75, but it also has a high value of the other “saturated” colours (R10 to R14), which allows the beautiful red of an object to be revealed and creates well-balanced and high quality lighting. The MEGAMAN® LED R9 series is perfect for food and other display lighting applications where a sense of freshness and the richness of red colour are needed.

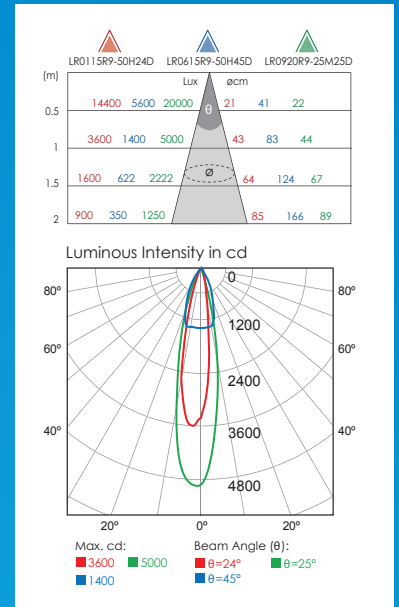


Figure 1: Test Colour Sample

TSC	Appearance under daylight	Sample
R1	Light greyish red	[Sample]
R2	Dark greyish yellow	[Sample]
R3	Strong yellow green	[Sample]
R4	Moderate yellowish green	[Sample]
R5	Light bluish green	[Sample]
R6	Light blue	[Sample]
R7	Light violet	[Sample]
R8	Light reddish purple	[Sample]
R9	Strong red	[Sample]
R10	Strong yellow	[Sample]
R11	Strong green	[Sample]
R12	Strong blue	[Sample]
R13	Light yellowish pink	[Sample]
R14	Moderate olive green	[Sample]