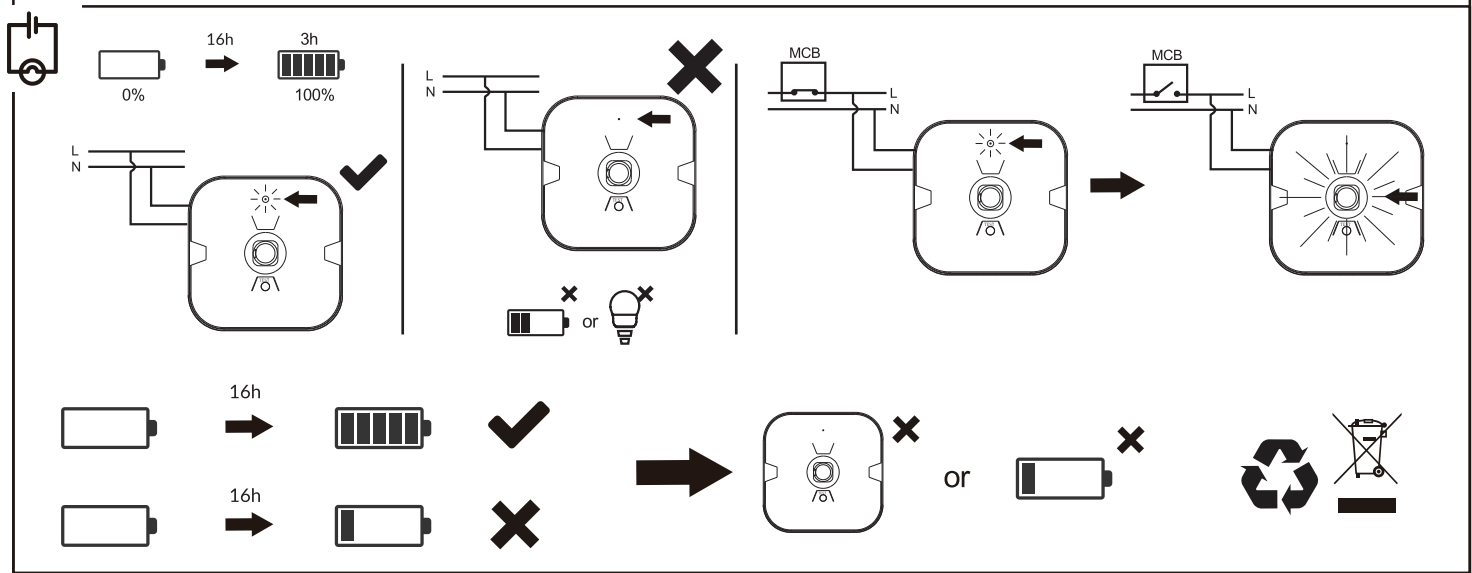
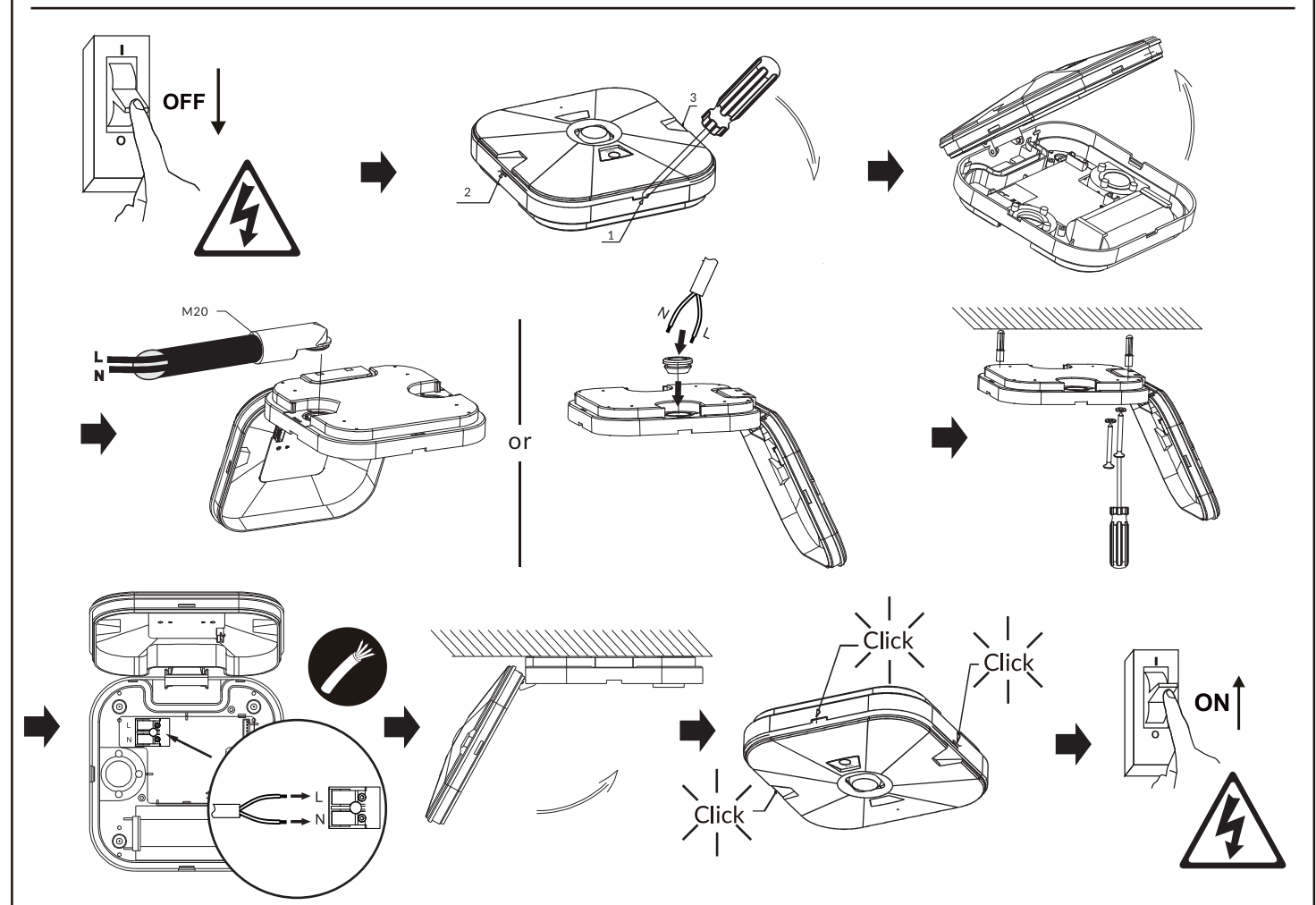
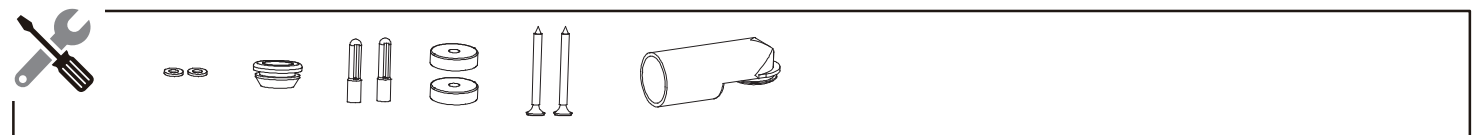


H05RN-F/3G1.0 → IP20

www.megaman.cc/user-guide



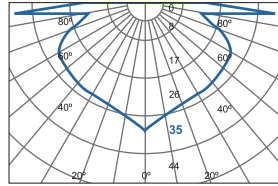
Instruction Manual | Bedienungsanleitung | Manual de instrucciones | Manuale d'istruzioni | Manuel d'instructions | Handleiding | Návod k použití

FEL70300v0-em

Open Area | 130lm | 0.5lux

Position	Height(m)	Distance (m)
⊙→⊙	2.8	11.2
⊙→⊙	3	11.4
⊙→⊙	4	12.1
⊙→⊙	5	12.3
⊙→⊙	6	11.9
⊙→⊙	7	11

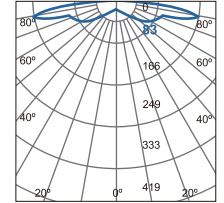
Position	Height(m)	Distance (m)
⊙→☒	2.8	4.5
⊙→☒	3	4.5
⊙→☒	4	4.5
⊙→☒	5	4.2
⊙→☒	6	3.4
⊙→☒	7	2.3



FEL70400v0-em

Corridor Area | 130lm | 1lux

Position	Height(m)	☒→☒	☒→☒	☒→☒	☒→☒
2.8	0.9	7.1	2.2	20.8	
3	0.9	7.1	2.2	21.4	
4	0.9	7.2	2.4	19.8	
5	1	5.9	3	20.6	



EMERGENCY LUMINAIRE TEST RECORD

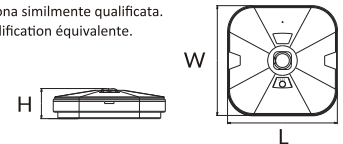
INSTALLATION ENGINEERS ----- TEL -----
 LUMINAIRE TYPE ----- IDENT/SERIAL No -----
 LOCATION ----- INSTALLATION DATE -----

MONTH	TEST TYPE	FIRST YEAR		SECOND YEAR		THIRD YEAR		FOURTH YEAR		FIFTH YEAR	
		SIGN	DATE	SIGN	DATE	SIGN	DATE	SIGN	DATE	SIGN	DATE
1	FUNCTIONAL										
2	FUNCTIONAL										
3	FUNCTIONAL										
4	FUNCTIONAL										
5	FUNCTIONAL										
6	1 HOUR										
7	FUNCTIONAL										
8	FUNCTIONAL										
9	FUNCTIONAL										
10	FUNCTIONAL										
11	FUNCTIONAL										
12	1 HOUR										
13	FULL DURATION										

DAILY: check charge indicators are lit maintained/combined lamps illuminate; any faults are recorded
 MONTHLY: in addition to the daily check - a functional test of at least 3 minutes duration to confirm lamp is working on battery power by simulating a mains failure.
 SIX MONTHLY: in addition to the daily check - a functional test of at least one hour to confirm lamp is working on battery power by simulating a mains failure.
 ANNUALLY: in addition to the daily check - a functional test of rated duration to confirm full operation to specification by simulating a mains failure.
 A copy of this report must accompany any fitting returned to the manufacturer for any reason.

Caution – Risk of Electric Shock! Vorsicht - GEFAHR EINES STROMSCHLAGS! ATENCIÓN - RIESGO DE DESCARGA ELÉCTRICA! Attenzione - RISCHIO DI SCOSSA ELETTRICA! ATTENTION - RISQUE DE CHOC ÉLECTRIQUE! Voorzichtig - GEVAAR VOOR EEN ELEKTRISCHE SCHOK! POZOR! - Riziko úrazu elektrickým proudem.

The light source contained in this luminaire shall only be replaced by the manufacturer or his service agent or a similar qualified person.
 Das in dieser Leuchte enthaltene Leuchtmittel darf nur durch den Hersteller, seinen Kundendienst oder entsprechend qualifiziertes Fachpersonal ausgetauscht werden.
 La fuente de iluminación de esta luminaria solo debe ser sustituida por el fabricante o su agente de servicio, o en su caso, por personal cualificado.
 La sorgente luminosa contenuta in questo apparecchio deve essere sostituita esclusivamente dal produttore, dal suo rappresentante o da una persona similmente qualificata.
 La source lumineuse contenue dans ce luminaire ne doit être remplacée que par le fabricant ou son agent de maintenance ou une personne de qualification équivalente.
 De lichtbron in deze lamp mag alleen worden vervangen door de fabrikant, zijn serviceagent of een vergelijkbaar gekwalificeerd persoon.
 Zdroj světla v tomto svítidle smí být vyměněn pouze elektrikářem, nebo servisním agentem výrobce.



Model	Battery	Power	Lumen	Duration	Optics	L (mm)	W (mm)	H (mm)
FEL70300v0-em	LiFePO4 3.2V 1500mAh	1W	130lm	3h	Open Area	130	130	35
FEL70400v0-em	LiFePO4 3.2V 1500mAh	1W	130lm	3h	Corridor	130	130	35

- All specifications are typically under 230VAC unless additionally stated.
- The emergency function test must be performed when a battery is fully charged over 16 hours.
- It is recommended to have full charge cycle for 16 hours in every 6 months.
- After first installation of the fitting, the battery must be charged for 16 hours.

