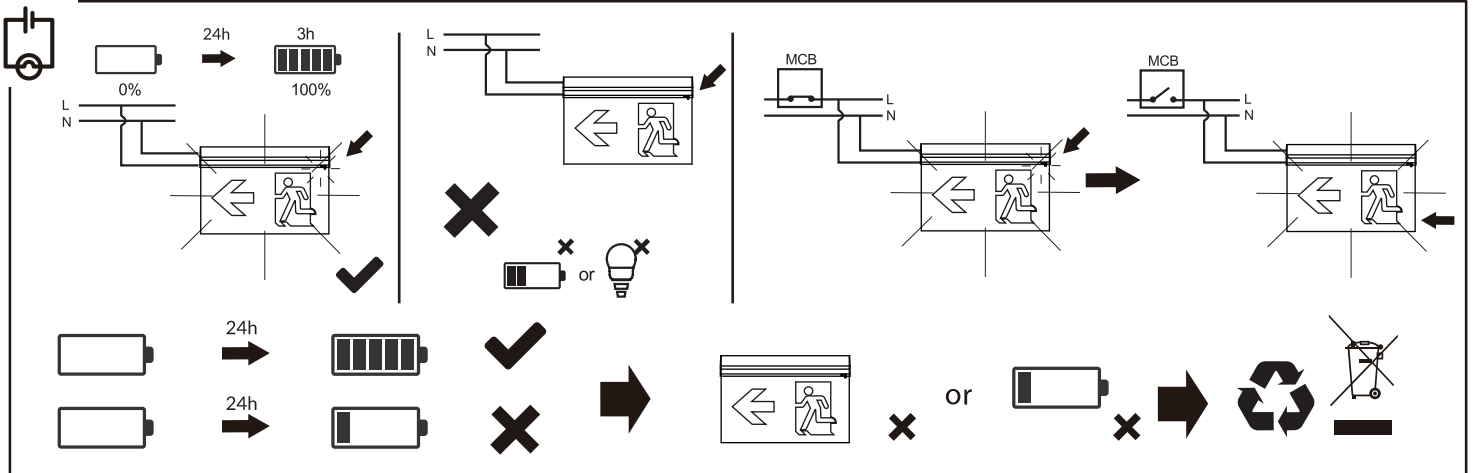


Optional:

Installation Steps:

- Turn the power switch to **OFF**.
- Drill holes in the ceiling for mounting brackets **A2** and screws **A1**. The distance between holes is 130mm.
- Attach the mounting brackets **A2** to the ceiling using screws **A1**.
- Attach the light fixture **LA8150** to the brackets. For optional cable **LA8149**, connect it to the fixture.
- For optional self-test module **LA11206**, insert it into the fixture. The module has a length of 30mm and a width of 6mm. The cable diameter is 0.75-1.5mm.
- Attach the cover plate **A3** to the fixture. Use a utility knife to trim the cover plate to fit.
- Turn the power switch to **ON**.



EMERGENCY LUMINAIRE TEST RECORD

INSTALLATION ENGINEERS TEL
 LUMINAIRE TYPE IDENT/SERIAL No
 LOCATION INSTALLATION DATE

MONTH	TEST TYPE	FIRST YEAR		SECOND YEAR		THIRD YEAR		FOURTH YEAR		FIFTH YEAR	
		SIGN	DATE	SIGN	DATE	SIGN	DATE	SIGN	DATE	SIGN	DATE
1	FUNCTIONAL										
2	FUNCTIONAL										
3	FUNCTIONAL										
4	FUNCTIONAL										
5	FUNCTIONAL										
6	1 HOUR										
7	FUNCTIONAL										
8	FUNCTIONAL										
9	FUNCTIONAL										
10	FUNCTIONAL										
11	FUNCTIONAL										
12	1 HOUR										
13	FULL DURATION										

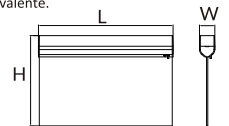
DAILY: check charge indicators are lit maintained/combined lamps illuminate; any faults are recorded
 MONTHLY: in addition to the daily check - a functional test of at least 3 minutes duration to confirm
 SIX MONTHLY: in addition to the daily check - a functional test of at least one hour to confirm
 ANNUALLY: in addition to the daily check - a functional test of rated duration to confirm
 A copy of this report must accompany any fitting returned to the manufacturer for any reason.

film lamp is working on battery power by simulating a mains failure.
 firm lamp is working on battery power by simulating a mains failure.
 firm full operation to specification by simulating a mains failure.



Caution – Risk of Electric Shock! Vorsicht - GEFAHR EINES STROMSCHLAGS! ATENCIÓN - RIESGO DE DESCARGA ELÉCTRICA! Attenzione - RISCHIO DI SCOSSA ELETTRICA! ATTENTION - RISQUE DE CHOC ÉLECTRIQUE! Voorzichtig - GEVAAR VOOR EEN ELEKTRISCHE SCHOK! POZOR! - Riziko úrazu elektrickým proudem.

The light source contained in this luminaire shall only be replaced by the manufacturer or his service agent or a similar qualified person.
 Das in dieser Leuchte enthaltene Leuchtmittel darf nur durch den Hersteller, seinen Kundendienst oder entsprechend qualifiziertes Fachpersonal ausgetauscht werden.
 La fuente de iluminación de esta luminaria solo debe ser sustituida por el fabricante o su agente de servicio, o en su caso, por personal cualificado.
 La sorgente luminosa contenuta in questo apparecchio deve essere sostituita esclusivamente dal produttore, dal suo rappresentante o da una persona similmente qualificata.
 La source lumineuse contenue dans ce luminaire ne doit être remplacée que par le fabricant ou son agent de maintenance ou une personne de qualification équivalente.
 De lichtbron in deze lamp mag alleen worden vervangen door de fabrikant, zijn serviceagent of een vergelijkbaar gekwalificeerd persoon.
 Zdroj světla v tomto svítidle smí být vyměněn pouze elektrikářem, nebo servisním agentem výrobce.



Model	Battery	Power	Charging	Duration	CCT	Self test	L (mm)	W (mm)	H (mm)
FEL71400v0-em	LiFePO4 3.2V 1500mAh	3.9W	24h	3h	6500K	No	315	36	212
FEL71400v0-em/st	LiFePO4 3.2V 1500mAh	3.9W	24h	3h	6500K	Yes	315	36	212

- All specifications are typically under 230VAC unless additionally stated.
- The emergency function test must be performed when a battery is fully charged over 24 hours.
- It is recommended to have full charge cycle for 24 hours in every 6 months.
- After first installation of the fitting, the battery must be charged for 24 hours.

